



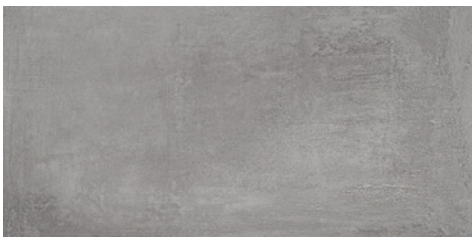
60 × 60 cm

UPH 230A hellgrau · light grey · gris clair



60 × 60 cm

UPH 400A hellgrau · light grey · gris clair



30 × 60 cm

UPH 830A hellgrau · light grey · gris clair



5 × 5 cm (30 × 30 cm)

Mosaik · Mosaic · Mosaïque

UPH 7100 hellgrau · light grey · gris clair



7 × 60 cm

Sockel · Plinth · Plinthe

UPH 170 hellgrau · light grey · gris clair



30 × 60 cm

Stufe Rille · Step Groove · Marche Rainure

UPH 870 hellgrau · light grey · gris clair



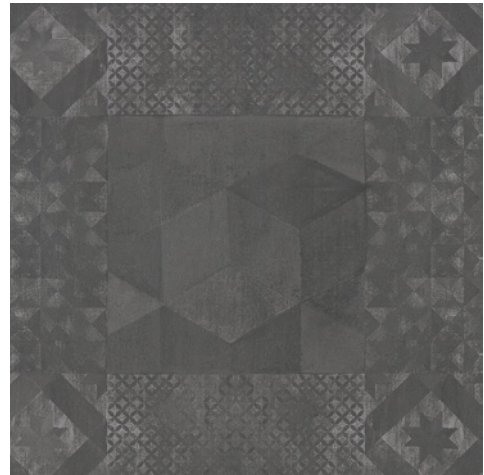
FORMAT FORMAT FORMAT	PREIS PRO PRICE PER PRIX PAR	STÜCK / M ² PIECES / M ² PIÈCES / M ²	KG / M ² KG / M ² KG / M ²	M ² / KARTON M ² / CARTON M ² / CARTON	STK / KARTON PCS / CARTON PCS / CARTON	KG / KARTON KG / CARTON KG / CARTON	M ² / PALETTE M ² / PALLET M ² / PALETTE	STK / PALETTE PCS / PALLET PCS / PALETTE	KG / PALETTE KG / PALLET KG / PALETTE
60 × 60 cm (598 × 598 × 8 mm)	M ²	2,7778	17,4001	1,4400	4	25,0560	51,8396	144	902,0160
30 × 60 cm (298 × 598 × 8 mm)	M ²	5,5556	17,2001	1,0800	6	18,5760	51,8396	288	891,6480
5 × 5 cm (48 × 48 × 8 mm)	STK · PCS	11,0000	17,0280	0,4545	5	7,7400	-	-	-
7 × 60 cm (70 × 598 × 8 mm)	STK · PCS	1,6700*	1,2057*	5,9880*	10	7,2200	-	-	-
30 × 60 cm (298 × 598 × 8 mm)	STK · PCS	1,6700*	5,1703*	3,5928*	6	18,5760	-	-	-

* Pro lfm · Per m · Par mètre courant

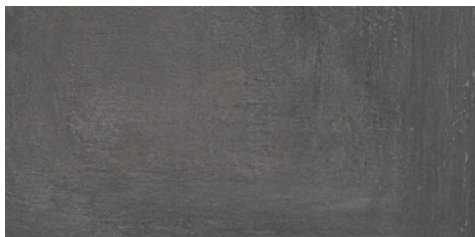




60 × 60 cm
UPH 231A grau · grey · gris



60 × 60 cm
UPH 401A grau · grey · gris



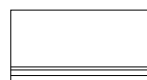
30 × 60 cm
UPH 831A grau · grey · gris



5 × 5 cm (30 × 30 cm)
Mosaik · Mosaic · Mosaïque
UPH 7110 grau · grey · gris








7 × 60 cm
Sockel · Plinth · Plinthe
UPH 171 grau · grey · gris



30 × 60 cm
Stufe Rille · Step Groove · Marche Rainure
UPH 871 grau · grey · gris



FORMAT FORMAT FORMAT	PREIS PRO PRICE PER PRIX PAR	STÜCK / M ² PIECES / M ² PIÈCES / M ²	KG / M ² KG / M ² KG / M ²	M ² / KARTON M ² / CARTON M ² / CARTON	STK / KARTON PCS / CARTON PCS / CARTON	KG / KARTON KG / CARTON KG / CARTON	M ² / PALETTE M ² / PALLET M ² / PALETTE	STK / PALETTE PCS / PALLET PCS / PALLETTE	KG / PALETTE KG / PALLET KG / PALETTE
60 × 60 cm (598 × 598 × 8 mm)	 M ²	2,7778	17,4001	1,4400	4	25,0560	51,8396	144	902,0160
30 × 60 cm (298 × 598 × 8 mm)	 M ²	5,5556	17,2001	1,0800	6	18,5760	51,8396	288	891,6480
5 × 5 cm (48 × 48 × 8 mm)	 STK · PCS	11,0000	17,0280	0,4545	5	7,7400	-	-	-
7 × 60 cm (70 × 598 × 8 mm)	 STK · PCS	1,6700*	1,2057*	5,9880*	10	7,2200	-	-	-
30 × 60 cm (298 × 598 × 8 mm)	 STK · PCS	1,6700*	5,1703*	3,5928*	6	18,5760	-	-	-

* Pro lfm · Per m · Par mètre courant



60 × 60 cm
UPH 232A beige



60 × 60 cm
UPH 402A beige



30 × 60 cm
UPH 832A beige



5 × 5 cm (30 × 30 cm)
Mosaik · Mosaic · Mosaïque
UPH 7120 beige



7 × 60 cm
Sockel · Plinth · Plinthe
UPH 172 beige



30 × 60 cm
Stufe Rille · Step Groove · Marche Rainure
UPH 872 beige



FORMAT FORMAT FORMAT	PREIS PRO PRICE PER PRIX PAR	STÜCK / M ² PIECES / M ² PIÈCES / M ²	KG / M ² KG / M ² KG / M ²	M ² / KARTON M ² / CARTON M ² / CARTON	STK / KARTON PCS / CARTON PCS / CARTON	KG / KARTON KG / CARTON KG / CARTON	M ² / PALETTE M ² / PALLET M ² / PALETTE	STK / PALETTE PCS / PALLET PCS / PALETTE	KG / PALETTE KG / PALLET KG / PALETTE
60 × 60 cm (598 × 598 × 8 mm)	M ²	2,7778	17,4001	1,4400	4	25,0560	51,8396	144	902,0160
30 × 60 cm (298 × 598 × 8 mm)	M ²	5,5556	17,2001	1,0800	6	18,5760	51,8396	288	891,6480
5 × 5 cm (48 × 48 × 8 mm)	STK · PCS	11,0000	17,0280	0,4545	5	7,7400	-	-	-
7 × 60 cm (70 × 598 × 8 mm)	STK · PCS	1,6700*	1,2057*	5,9880*	10	7,2200	-	-	-
30 × 60 cm (298 × 598 × 8 mm)	STK · PCS	1,6700*	5,1703*	3,5928*	6	18,5760	-	-	-

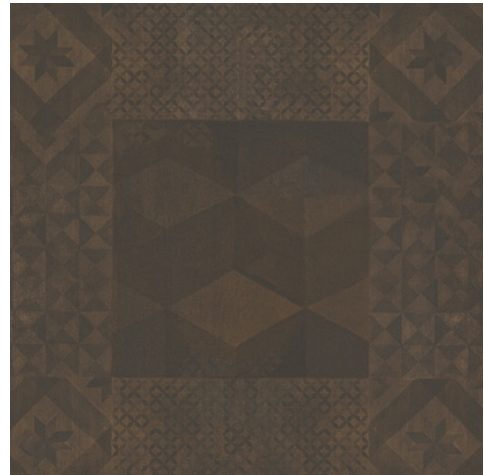
* Pro lfm · Per m · Par mètre courant





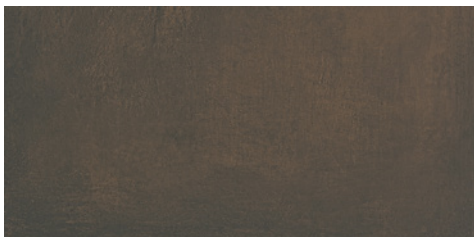
60 × 60 cm

UPH 233A kupfer · copper · cuivre



60 × 60 cm

UPH 403A kupfer · copper · cuivre



30 × 60 cm

UPH 833A kupfer · copper · cuivre



5 × 5 cm (30 × 30 cm)

Mosaik · Mosaic · Mosaïque

UPH 7130 kupfer · copper · cuivre



7 × 60 cm

Sockel · Plinth · Plinthe

UPH 173 kupfer · copper · cuivre








30 × 60 cm

Stufe Rille · Step Groove · Marche Rainure

UPH 873 kupfer · copper · cuivre



FORMAT FORMAT FORMAT	PREIS PRO PRICE PER PRIX PAR	STÜCK / M ² PIECES / M ² PIÈCES / M ²	KG / M ² KG / M ² KG / M ²	M ² / KARTON M ² / CARTON M ² / CARTON	STK / KARTON PCS / CARTON PCS / CARTON	KG / KARTON KG / CARTON KG / CARTON	M ² / PALETTE M ² / PALLET M ² / PALETTE	STK / PALETTE PCS / PALLET PCS / PALETTE	KG / PALETTE KG / PALLET KG / PALETTE
60 × 60 cm (598 × 598 × 8 mm)	 M ²	2,7778	17,4001	1,4400	4	25,0560	51,8396	144	902,0160
30 × 60 cm (298 × 598 × 8 mm)	 M ²	5,5556	17,2001	1,0800	6	18,5760	51,8396	288	891,6480
5 × 5 cm (48 × 48 × 8 mm)	 STK · PCS	11,0000	17,0280	0,4545	5	7,7400	-	-	-
7 × 60 cm (70 × 598 × 8 mm)	 STK · PCS	1,6700*	1,2057*	5,9880*	10	7,2200	-	-	-
30 × 60 cm (298 × 598 × 8 mm)	 STK · PCS	1,6700*	5,1703*	3,5928*	6	18,5760	-	-	-

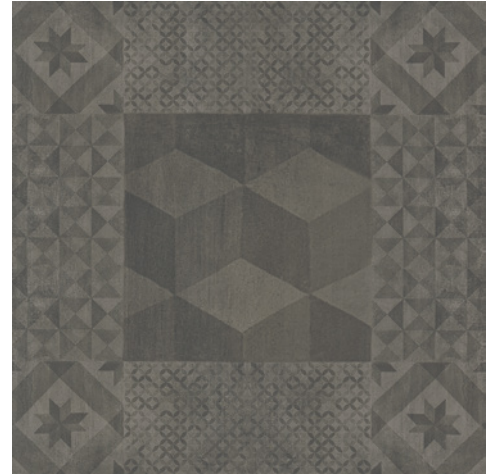
* Pro lfm · Per m · Par mètre courant

UPHILL

60 × 60 30 × 60



60 × 60 cm
UPH 235A graphit · graphite



60 × 60 cm
UPH 405A graphit · graphite



30 × 60 cm
UPH 835A graphit · graphite



5 × 5 cm (30 × 30 cm)
Mosaik · Mosaic · Mosaïque
UPH 7150 graphit · graphite



7 × 60 cm
Sockel · Plinth · Plinthe
UPH 175 graphit · graphite



30 × 60 cm
Stufe Rille · Step Groove · Marche Rainure
UPH 875 graphit · graphite



FORMAT FORMAT FORMAT	PREIS PRO PRICE PER PRIX PAR	STÜCK / M ² PIECES / M ² PIÈCES / M ²	KG / M ² KG / M ² KG / M ²	M ² / KARTON M ² / CARTON M ² / CARTON	STK / KARTON PCS / CARTON PCS / CARTON	KG / KARTON KG / CARTON KG / CARTON	M ² / PALETTE M ² / PALLET M ² / PALETTE	STK / PALETTE PCS / PALLET PCS / PALETTE	KG / PALETTE KG / PALLET KG / PALETTE
60 × 60 cm (598 × 598 × 8 mm)	M ²	2,7778	17,4001	1,4400	4	25,0560	51,8396	144	902,0160
30 × 60 cm (298 × 598 × 8 mm)	M ²	5,5556	17,2001	1,0800	6	18,5760	51,8396	288	891,6480
5 × 5 cm (48 × 48 × 8 mm)	STK · PCS	11,0000	17,0280	0,4545	5	7,7400	-	-	-
7 × 60 cm (70 × 598 × 8 mm)	STK · PCS	1,6700*	1,2057*	5,9880*	10	7,2200	-	-	-
30 × 60 cm (298 × 598 × 8 mm)	STK · PCS	1,6700*	5,1703*	3,5928*	6	18,5760	-	-	-

* Pro lfm · Per m · Par mètre courant

